

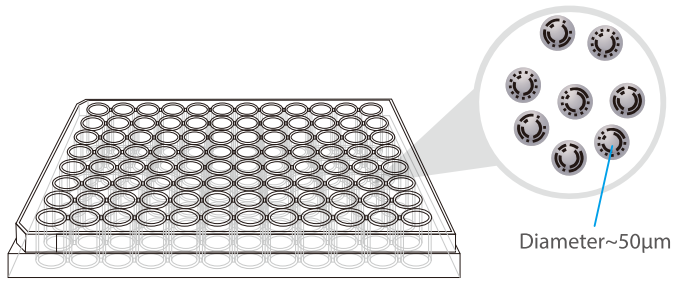


IntelliPlex™ ROS1 Rearrangement Kit

The IntelliPlex ROS1 Rearrangement Kit is a qualitative molecular assay for the detection of gene rearrangements on variants CD74-ROS1, EZR-ROS1, SLC34A2-ROS1, SDC4-ROS1, TPM3-ROS1, FIG-ROS1, LRIG3-ROS1 of the ROS1 gene. The kit offers a broad coverage of 14 variants in a single well by using the one-step RT-PCR and π Code MicroDisc technologies.

Single-Well Multiplexing

Multiplexing is made possible by using the π Code MicroDiscs technology. Each probes are individually coated on the MicroDiscs of different image patterns. The coated MicroDiscs are then pooled together for hybridization in a single-well format.



ROS1 (14 Variants)

Variants	Exon Note
CD74-ROS1	C6;R32, C6;R34
EZR-ROS1	E10;R34
SLC34A2-ROS1	S4;R32, S4;R34, S13del;R32, S13del;R34
SDC4-ROS1	SD2;R32, SD4;R32, SD4;R34
TPM3-ROS1	T8;R35
FIG-ROS1	F3;R36, F7;R35
LRIG3-ROS1	L16;R35

▶ PRODUCT HIGHLIGHTS

- Single-well multiplex detection
- Highly sensitive (~500 copies)
- Low sample input (10ng)
- < 6 hrs turnaround time (sample preparation included)

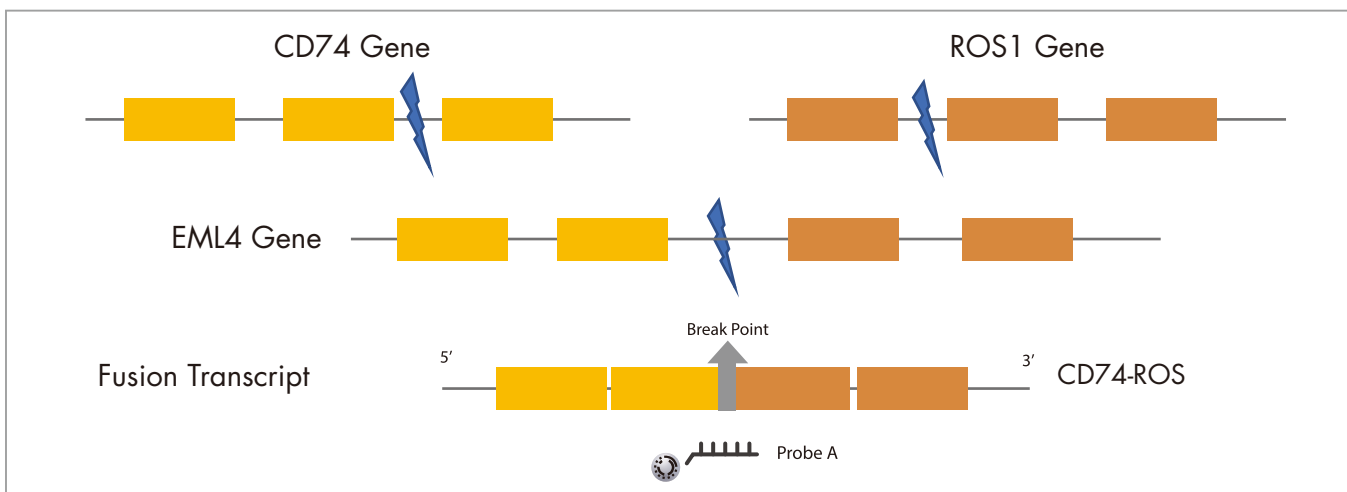
▶ INSTRUMENTATIONS

- DigiPlex™ Thermocycler
- IntelliPlex™ 1000 π Code Processor
- PlexBio™ 100 Fluorescent Analyzer

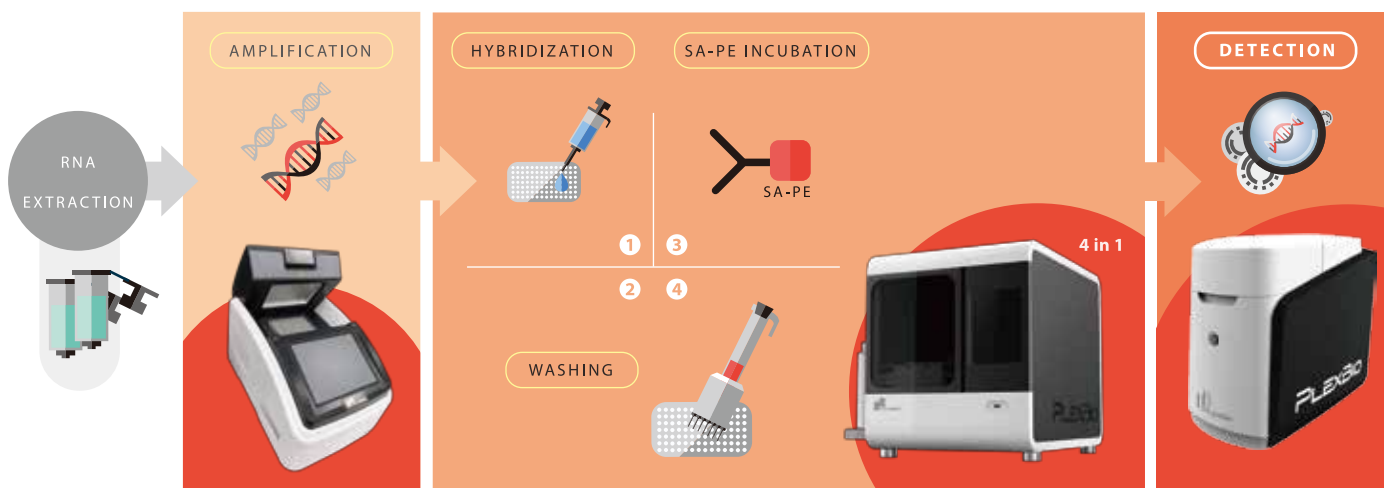
▶ SPECIMEN TYPES

- FFPE
- Fresh Tissue

Dual Probe Detection

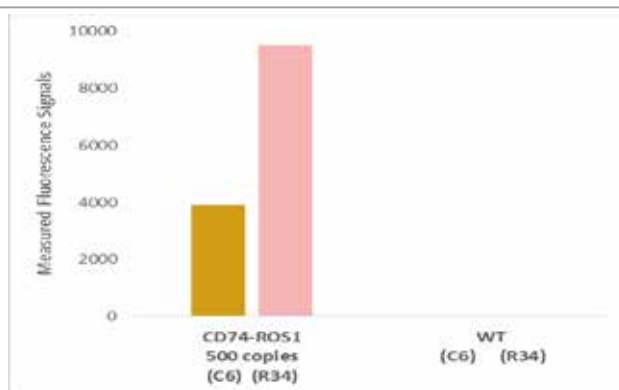


Assay Work Flow



High Sensitivity

An example performance of the IntelliPlex ROS1 Rearrangement Kit, as illustrated by its capability to detect small amounts of variants among wild type.



Order Information

Category	Product Name	Package Size	Cat. No.
Assay Kit	IntelliPlex™ ROS1 Rearrangement Kit	24 rxns	82024

PlexBio Co., Ltd.

6F-1, No. 351 Yangguang Street, Neihu District, Taipei City 114, Taiwan, R.O.C

Tel: +886-2-2627-5878 Fax: +886-2-2627-5979

Order info : order@plexbio.com

General info : marketing@plexbio.com